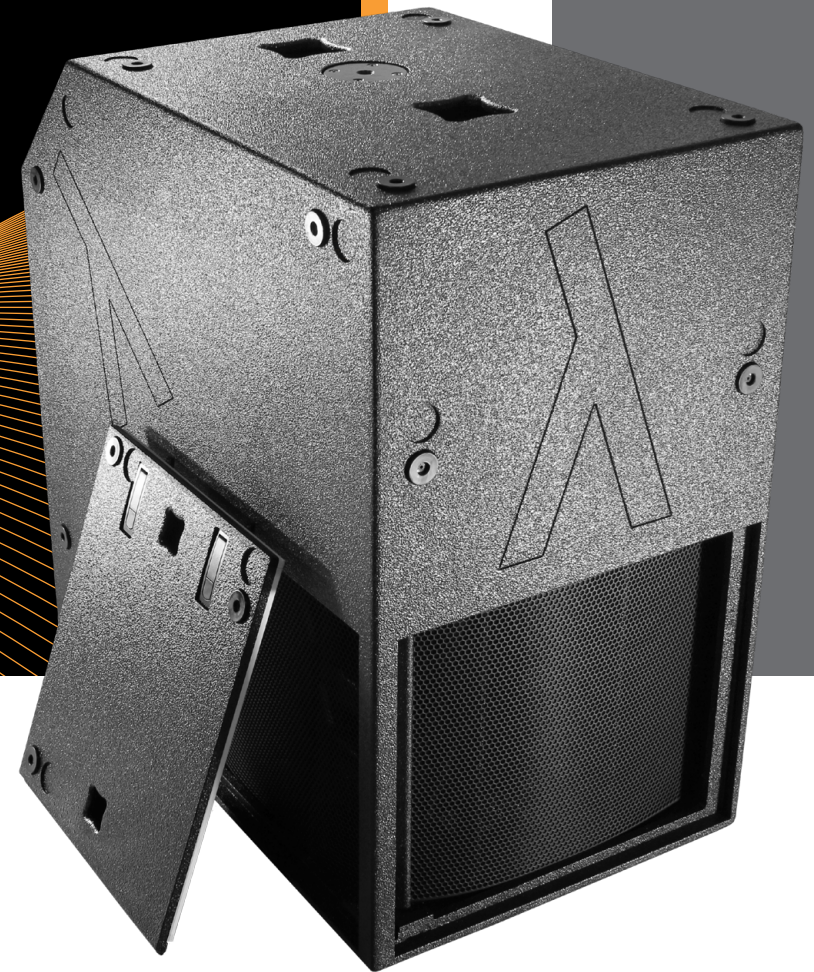


ALWAYS A WAVELENGTH AHEAD.

DH-18 DIGITALHORN



DESCRIPTION

The revolutionary DH-18 Digitalhorn is based on a completely new design approach, which incorporates two operational modes and allows for three different array configurations.

More than three meters of acoustic pathway, with accurately matched discrete horn segments can be found in the inside of this hornloaded subwoofer.

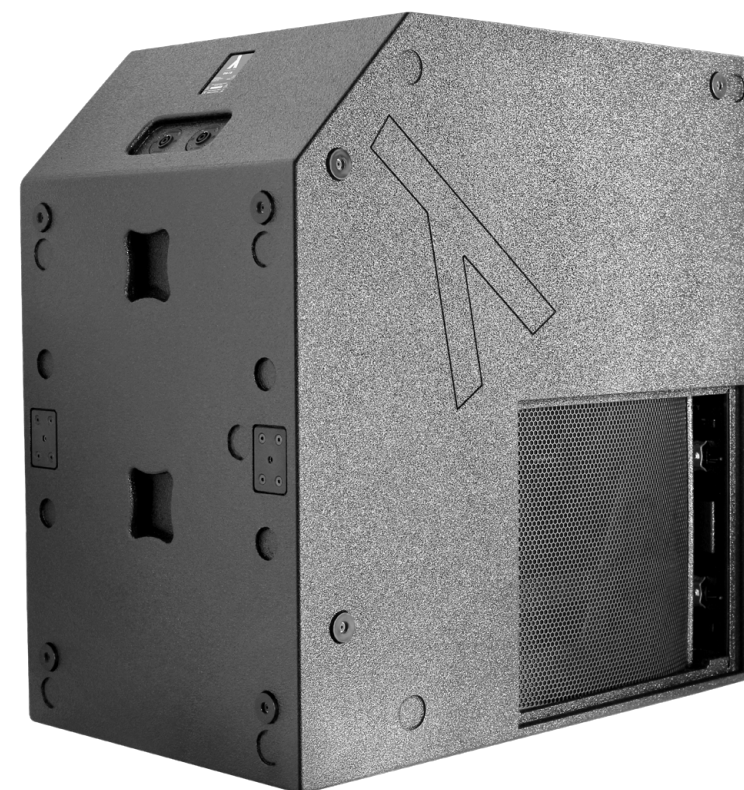
The target of the technical development aimed for an extremely low cutoff frequency including highest possible efficiency within the operational bandwidth. Furthermore the Digitalhorn works with the same uncompromising low cutoff frequency in single mode operation.



FEATURES

Within a glimpse of an eye, two exchangeable modes of operation provide unparalleled flexibility for almost any type of application. The integrated wheelboard mounting works with two Kombi-Pins to join fast transportation and vibration free connection in a single system.

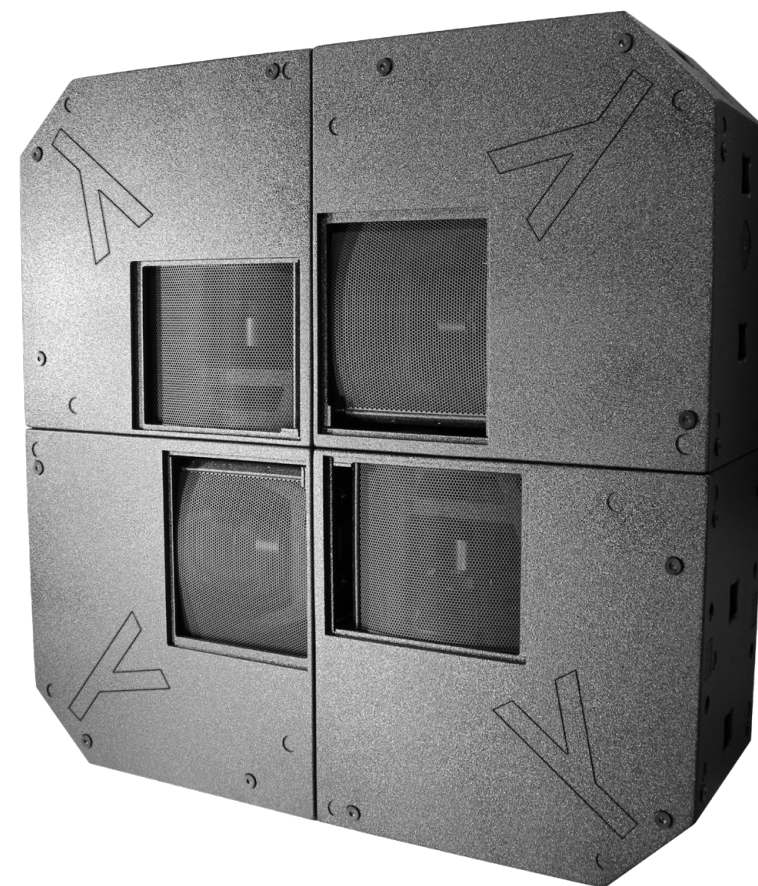
- Maximized efficiency
- Highly dynamic and accurate impulse reproduction
- +/- 16mm linear cone excursion
- D-Mode (Directivity Mode)
- S-Mode (Space Mode)
- Sophisticated stacking system



APPLICATIONS

Because of its unique mechanical design, the DH-18 provides an outstanding rear-attenuation, especially in its Directivity Mode. Acoustical room modes could be drastically minimized in indoor applications due to the target- aimed sound radiation.

- Scaleable FOH sound reinforcement
- Arenas / Stadiums
- Clubs / Discos
- Infrasonic applications
- Cinema installations
- Phased Array / Beamforming



PERFORMANCE

System	Extreme high power subbass with Digitalhorn technology
Configuration	1 x 18" Ultra long excursion driver with 5.3" VC as well as glass fiber and epoxy reinforced cone Aluminium demodulation rings
Power Handling	3600W RMS amping power
Frequency Response (S-Mode & D-Mode)	28-110Hz (+/- 3dB) 30-120Hz (+/- 3dB)
Sensitivity (S-Mode & D-Mode)	102dB / 1W / 1m 104dB / 1W / 1m
Connection	2x Neutrik NL4 Speakon
Impedance	4 Ω



PHYSICAL

Enclosure	Rigid braced construction of special 15mm lightweight-wood	
Finish	High-density polyurethane-coating Black	
Front Cover	Coated perforated 2mm steel with subjacent micro-meshed fabric	
Dimension	Inches	Millimeters
Height	37.9	962
Width	22.9	582
Depth	37.9	962
Weight	Pounds	Kilograms
	128.9	58.5

